

## Gr 12

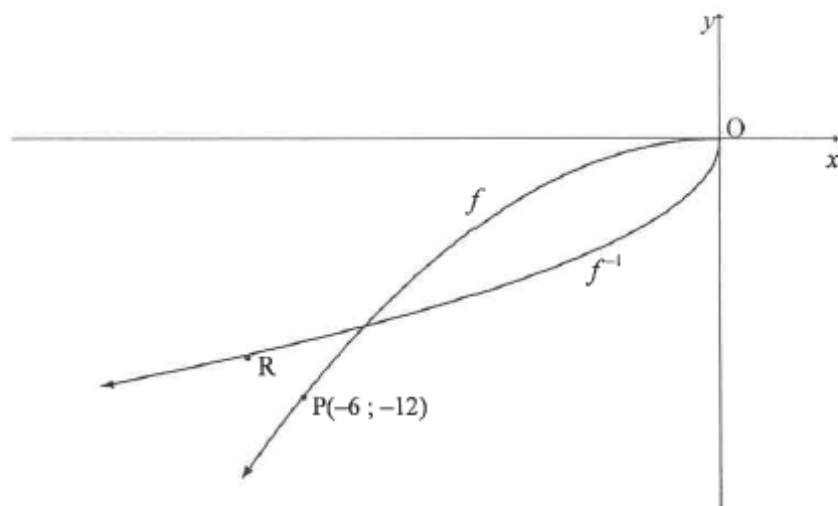
### Informal Test

#### Function and Inverses

##### QUESTION 4

In the diagram below, the graph of  $f(x) = ax^2$  is drawn in the interval  $x \leq 0$ .

The graph of  $f^{-1}$  is also drawn.  $P(-6; -12)$  is a point on  $f$  and  $R$  is a point on  $f^{-1}$ .



- 4.1 Is  $f^{-1}$  a function? Motivate your answer. (2)
- 4.2 If  $R$  is the reflection of  $P$  in the line  $y = x$ , write down the coordinates of  $R$ . (1)
- 4.3 Calculate the value of  $a$ . (2)
- 4.4 Write down the equation of  $f^{-1}$  in the form  $y = \dots$  (3)
- [8]