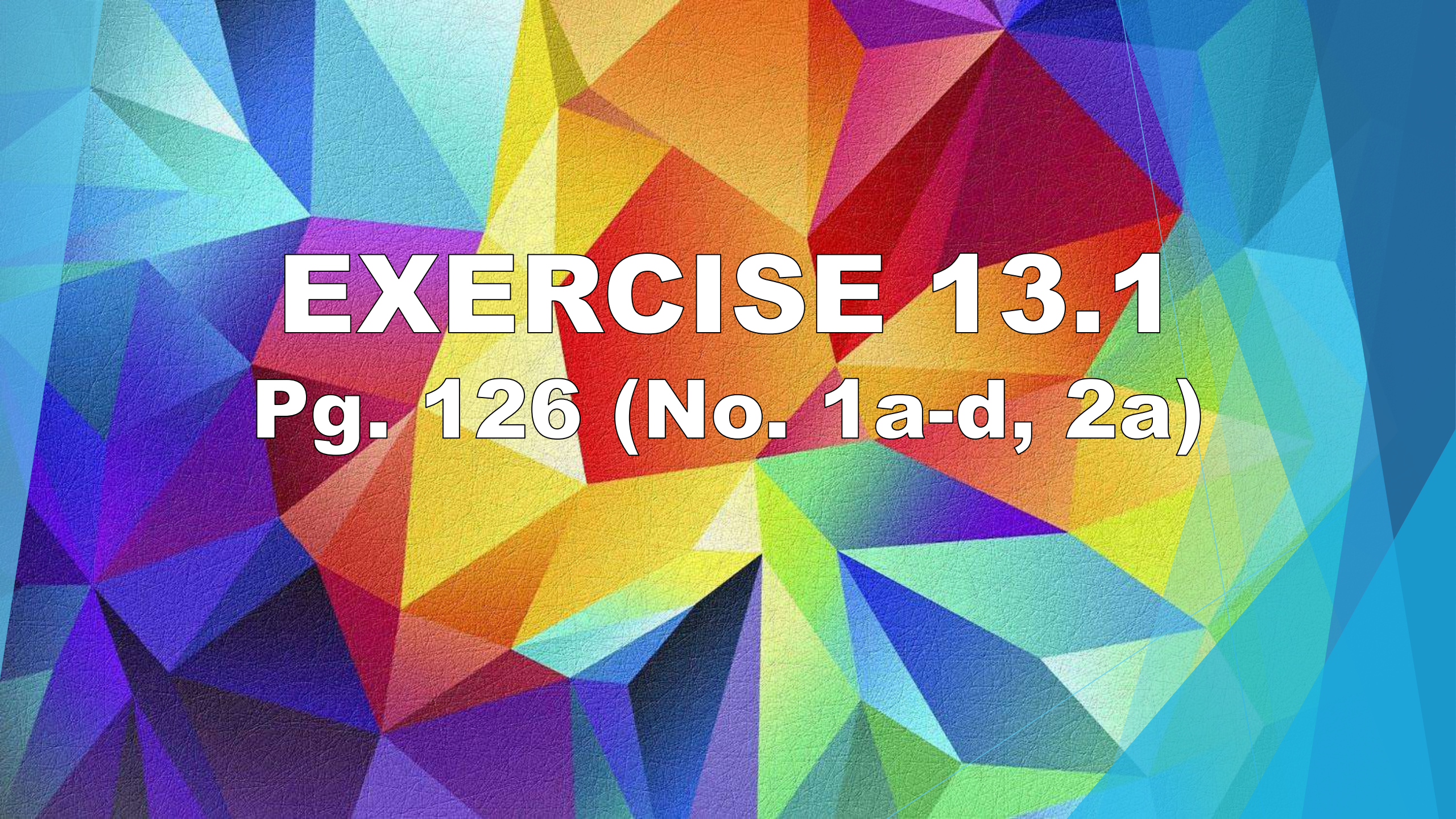


GEOMETRY OF 2D SHAPES

Exercises

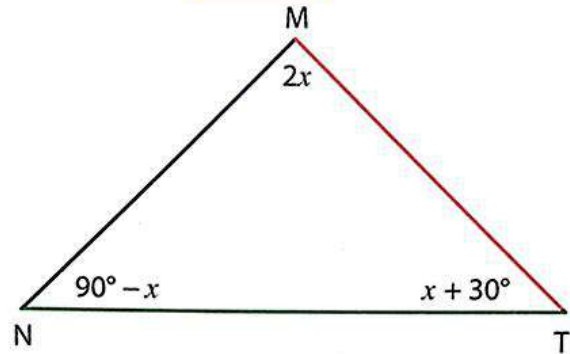


EXERCISE 13.1
Pg. 126 (No. 1a-d, 2a)

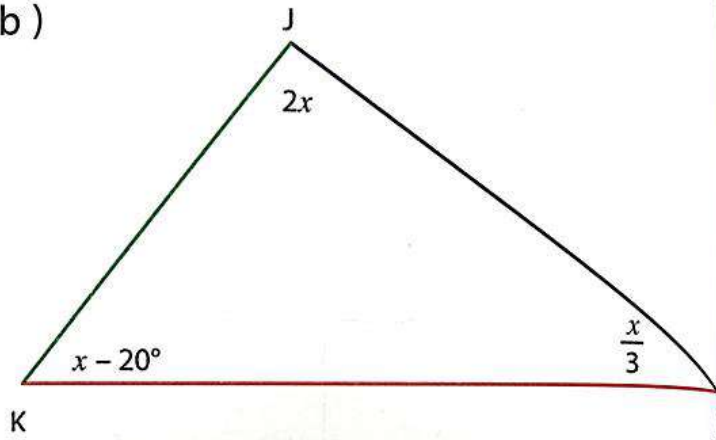
EXERCISE 13.1 Pg. 126 (No. 1a-d, 2a)

1. Solve for x and **classify** each triangle.

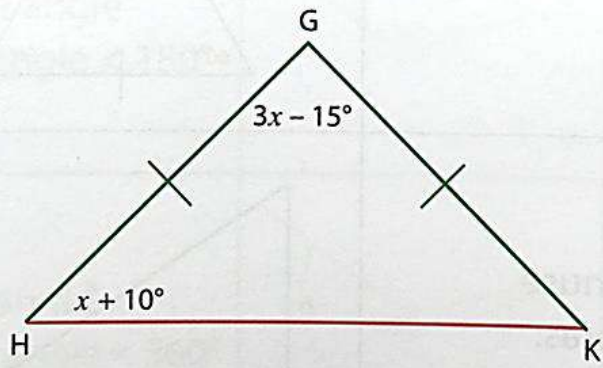
a)



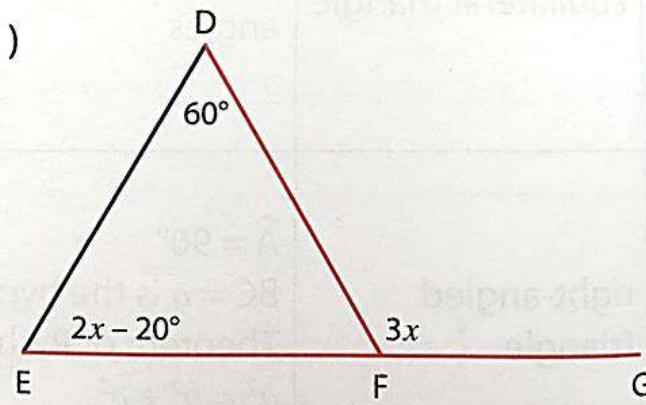
b)



c)

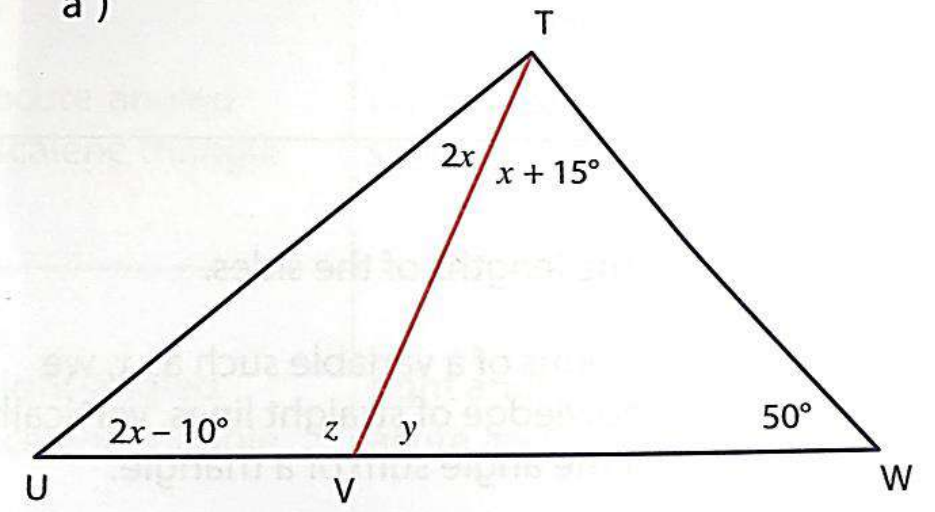


d)



2. Solve for x , y and z and **classify**, with reasons, the triangle.

a)





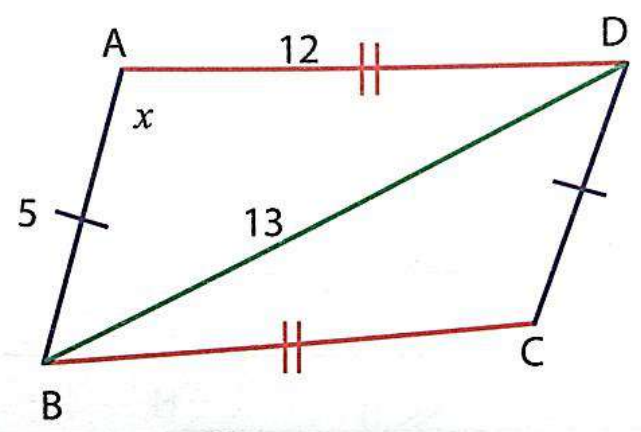
EXERCISE 13.2

Pg. 128 (No. 1,2,3)

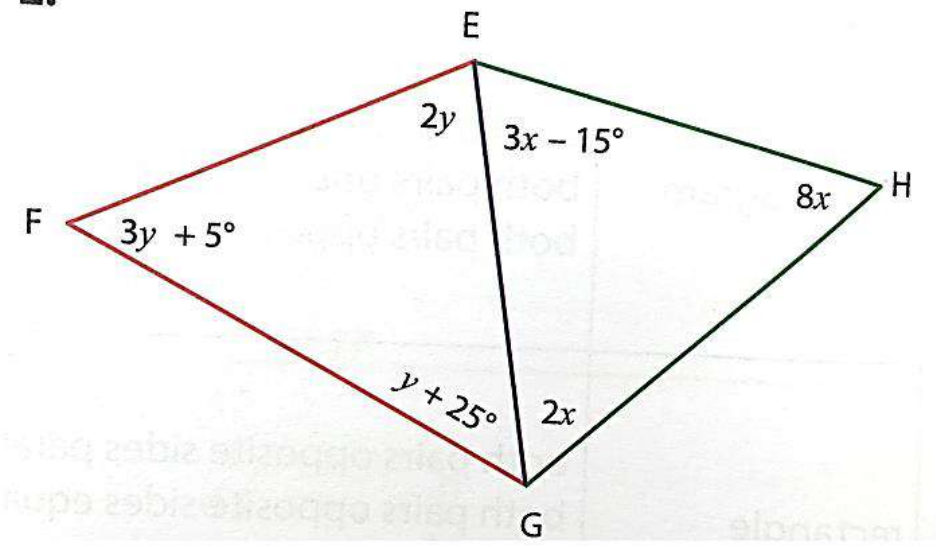
EXERCISE 13.2 Pg. 128 (No. 1,2,3)

Solve for x and/or y where necessary and then classify each quadrilateral. Reasons must be given. Quadrilaterals have not been drawn to scale.

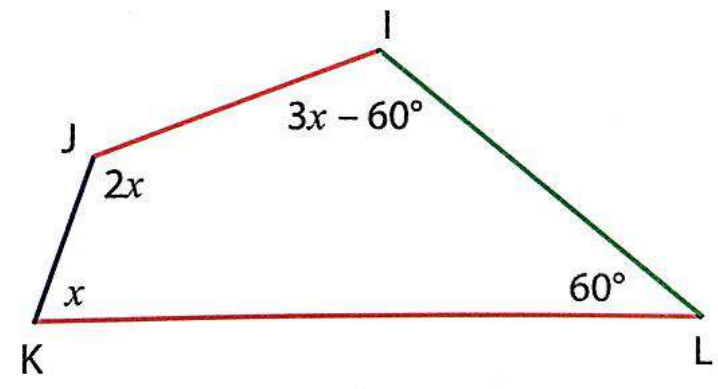
1.



2.



3.





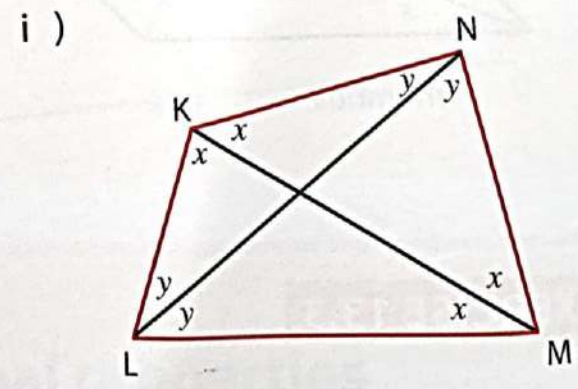
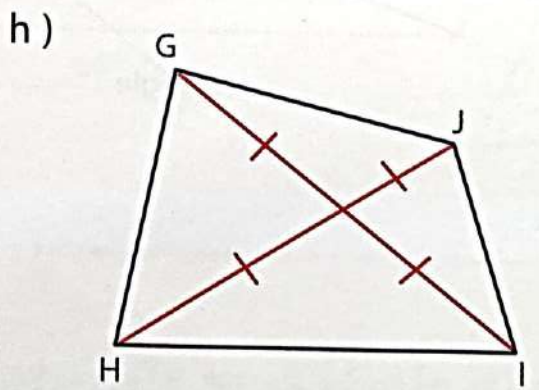
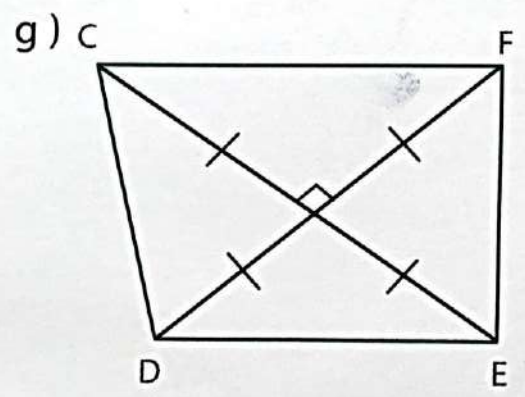
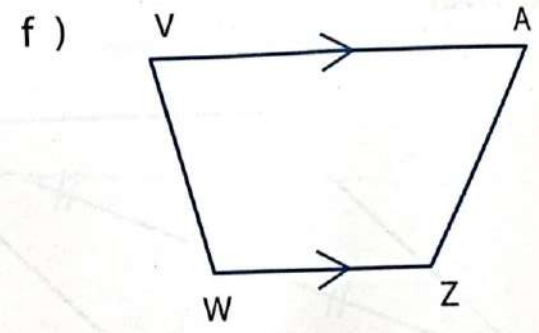
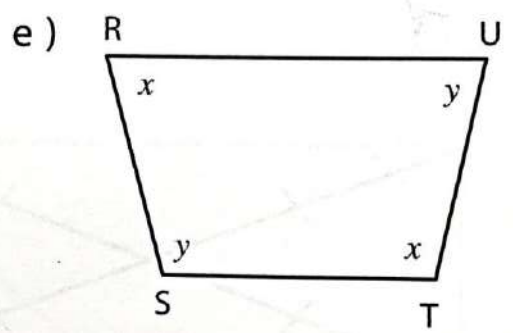
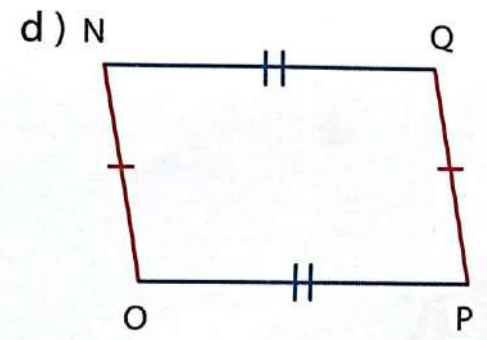
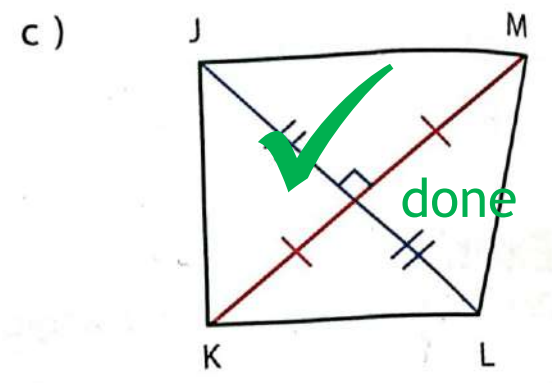
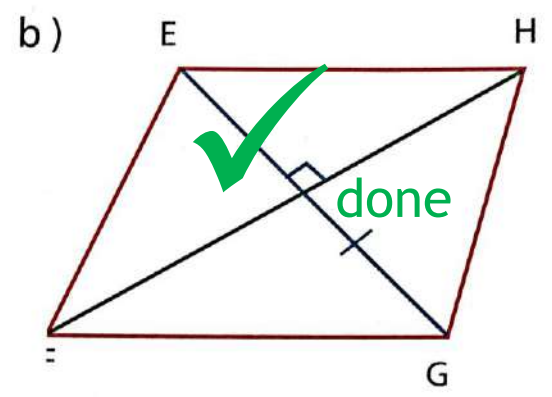
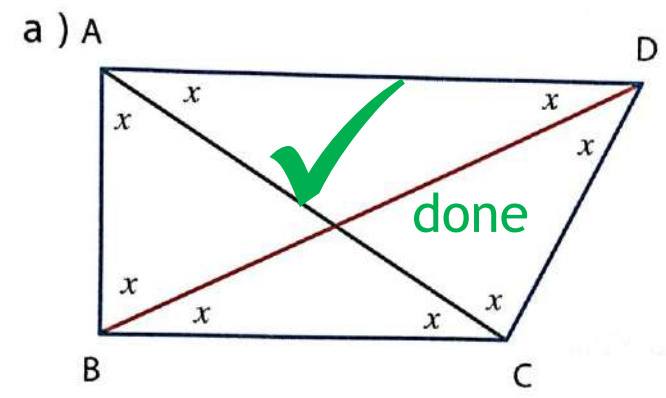
EXERCISE 13.4

Pg. 128 (No. 1d-i)

EXERCISE 13.4 Pg. 130 (No. 1 d,e,f,g,h,i)

Properties of Quads Pg.127
Or Sharp Worksheet on
Google Classroom

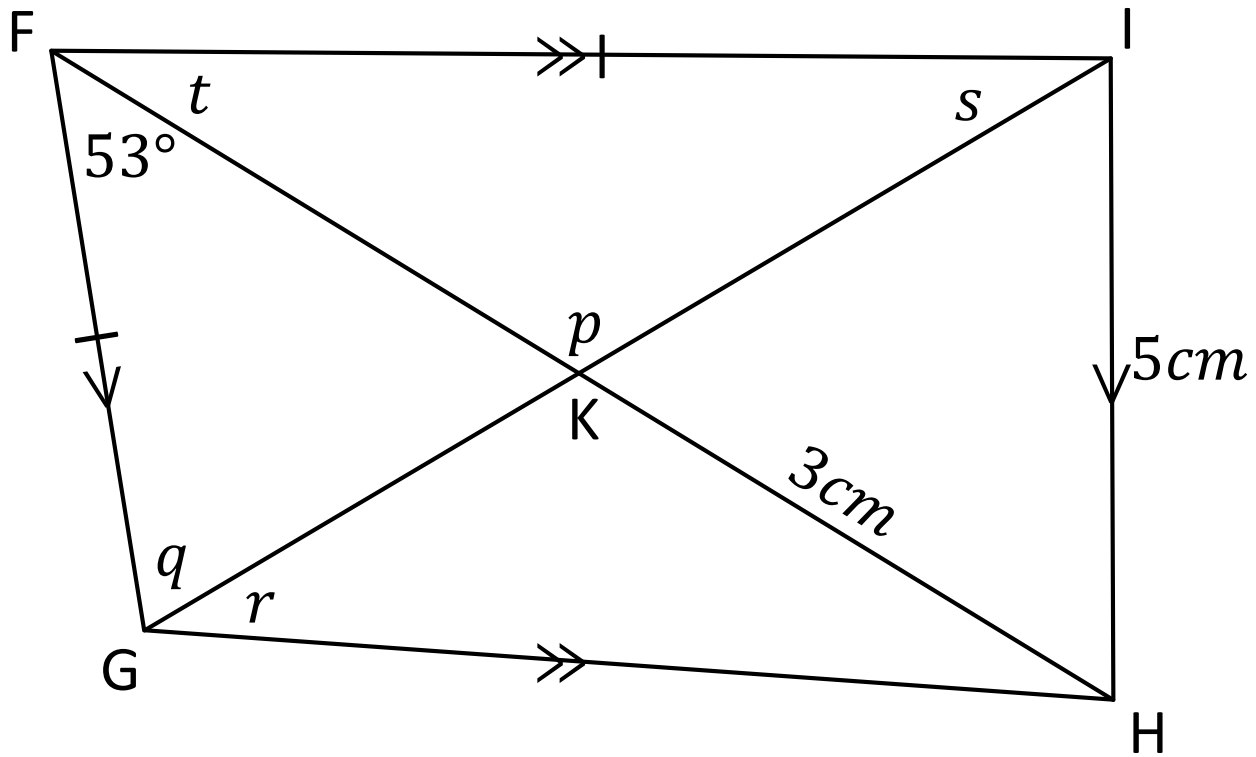
Classify each quadrilateral and briefly justify your answer. The sketches are not drawn to scale





EXERCISE 13.5

Pg. 131 (No. 2ab)



- Classify quadrilateral $FGHI$, giving reasons.
- Calculate, giving reasons, p, q, r, s and t .